



FUSS & O'NEILL

Public Works in Collaboration



March 11, 2020



From Napkin to National Award – How Did We Get Here?





Recognizing Opportunity





Recognizing Opportunity

- TOD
- Road Diet
- Roundabout
- New Traffic Signals
- Pedestrian Improvements
- Complete Streets



Phase IV



States • CT • Hartford Co. • New Britain

But How to Get People There?



Downtown New Britain, CT

Main Street Bridge
(City Owned)

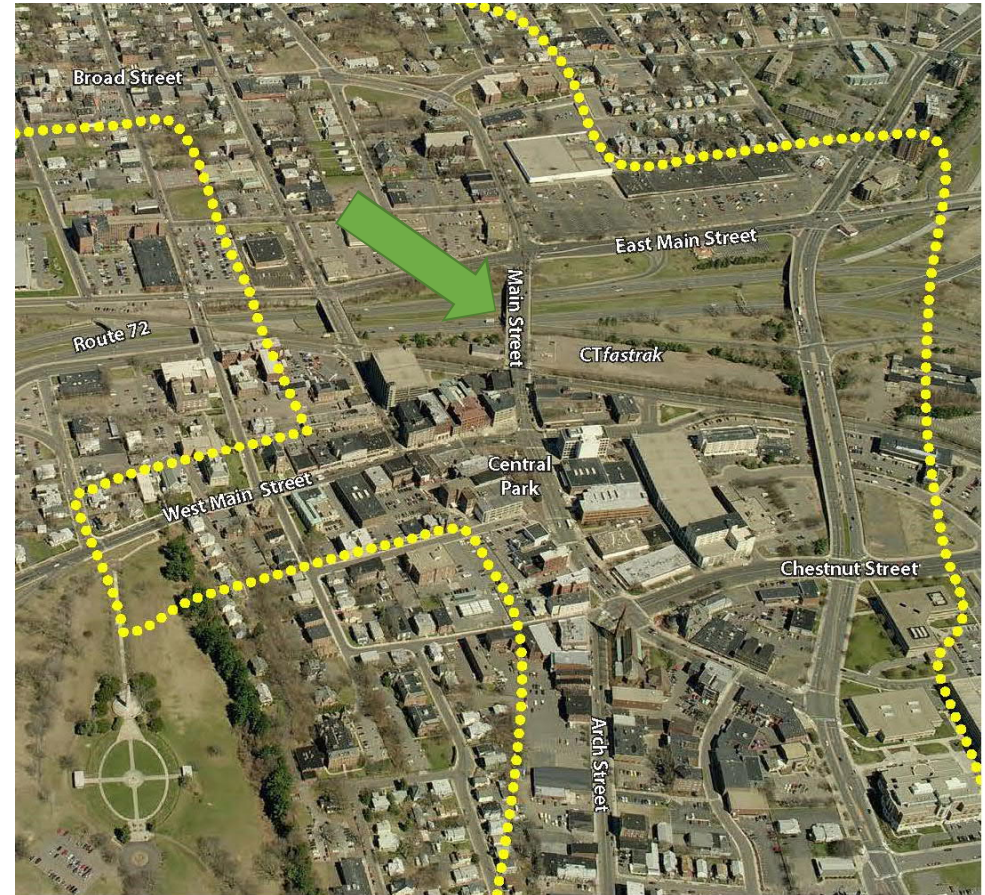
Route 72



25 feet 10 m

The Problems

- Route 72 was neither walkable nor bikeable.
- The Main Street Bridge was not pedestrian friendly.
- Two vibrant neighborhoods were divided.
- People tended to “stay on their side of the bridge”.





The Potential

- CTfastrak Station opened.
- Both Downtown and the Little Poland Neighborhood had businesses, established clientele, and economic promise.
- TOD!!!





So, What to Do?



SVIGALS + PARTNERS

Richter & Cegan Inc.
Landscape Architects Urban Designers Land Planners

PIRIE
ASSOCIATES

f FUSS & O'NEILL



The Team



Ted DeSantos
Fuss & O'Neill

Mark Moriarty
City of New Britain

Rob Trotter
City of New Britain

Marissa Mead
Svigals + Partners



Mayor Erin Stewart
City of New Britain

Jason Palmer
SignPro

Peter Rappoccio
SignPro

Mark Moriarty
City of New Britain

Rob Trotter
City of New Britain



Focus



Program & Function

Bridge & Artistic Imagery

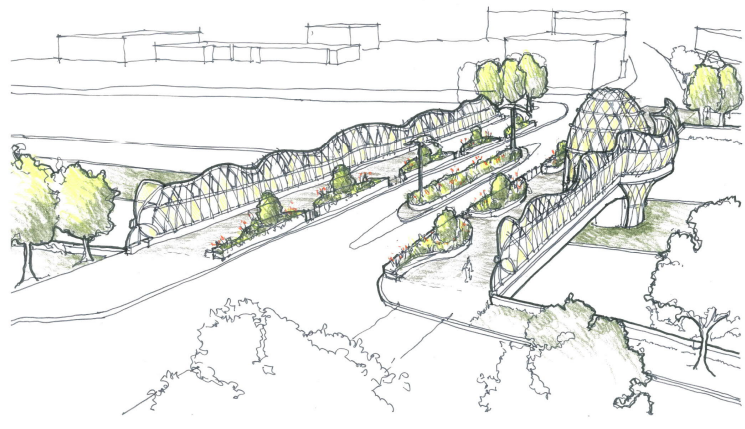
Design Charrette

Culture and History

industria implet alveare et melle fruitur
"industry fills the hive and enjoys the honey"

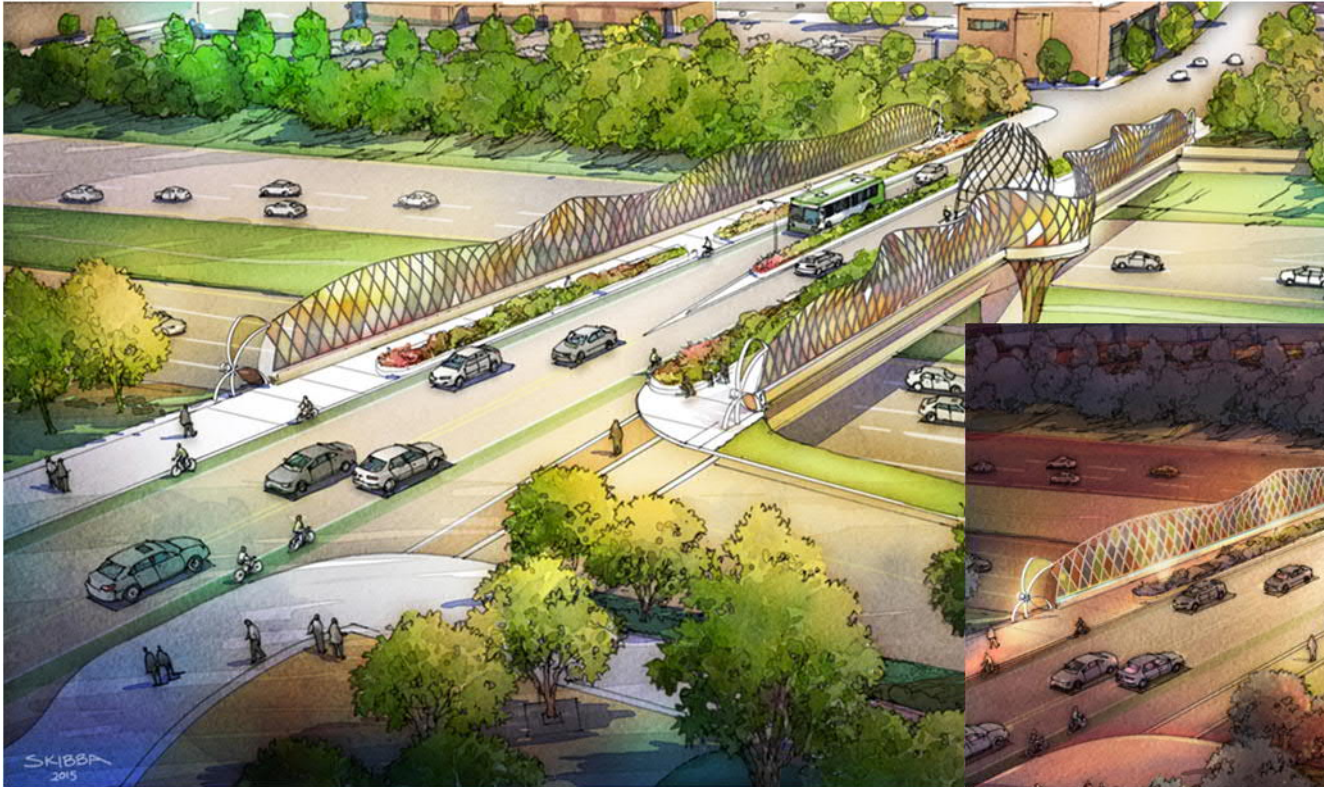


Evolution



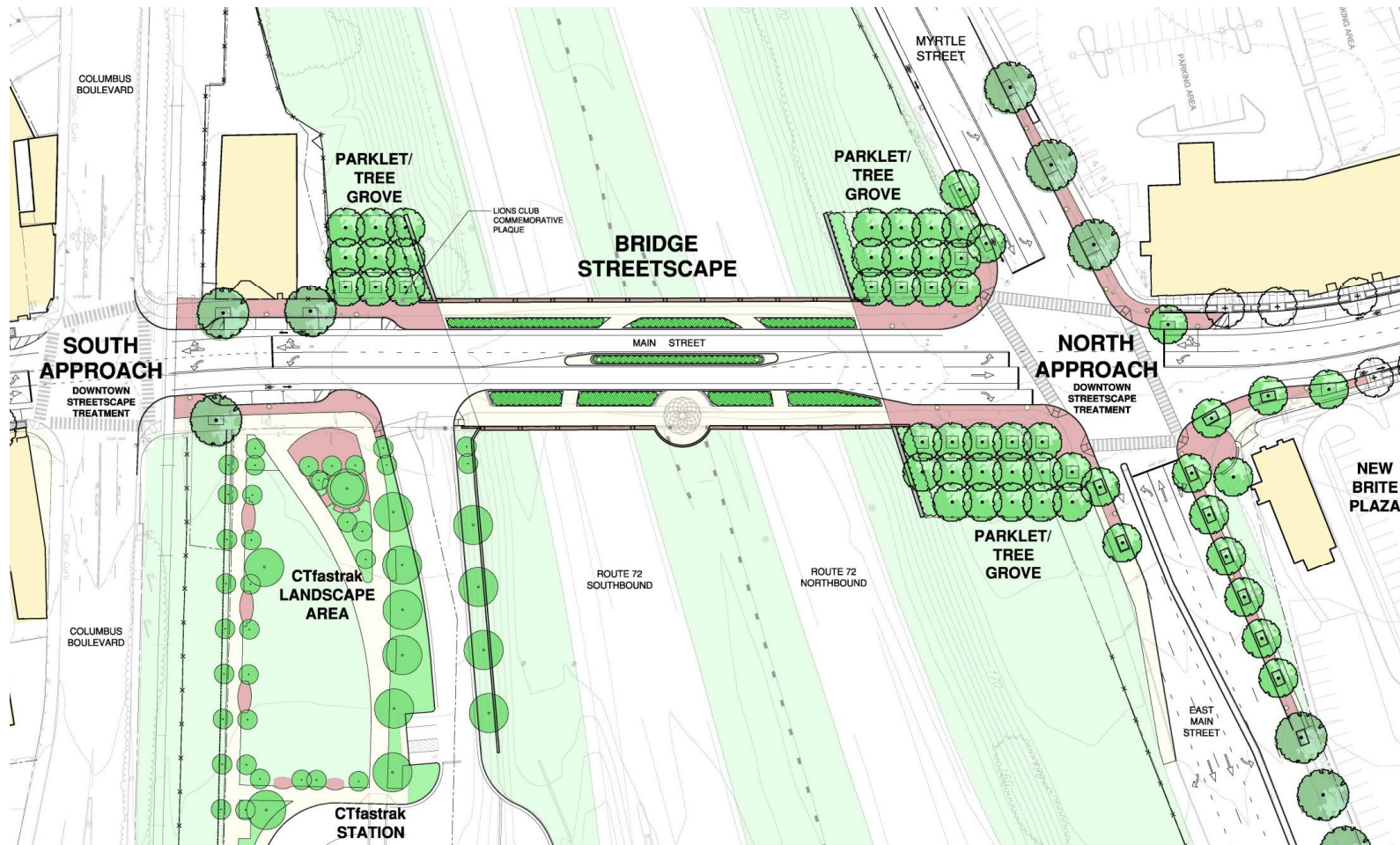


Evolution





Evolution

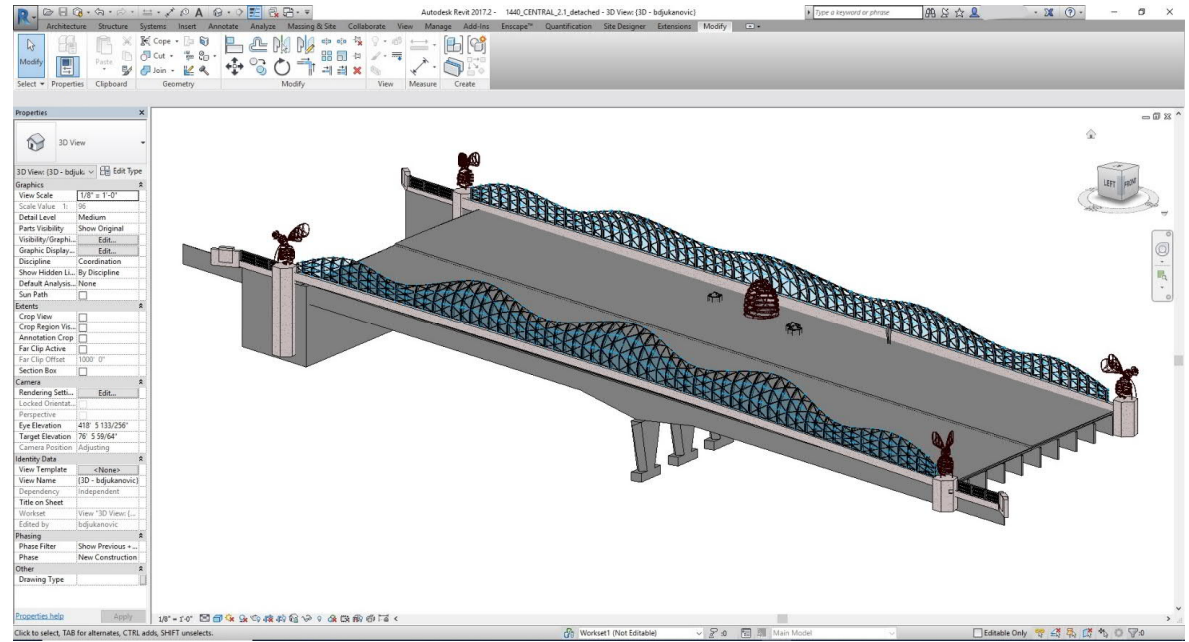
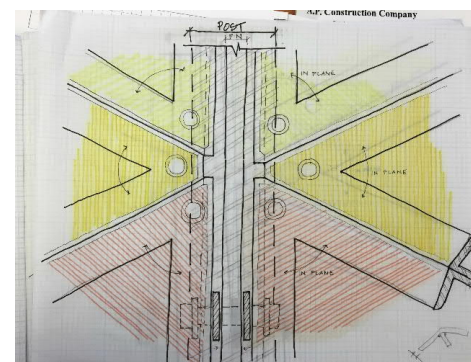
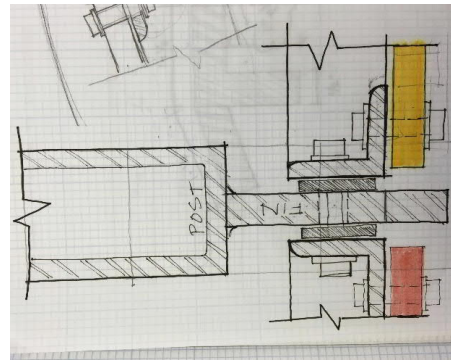
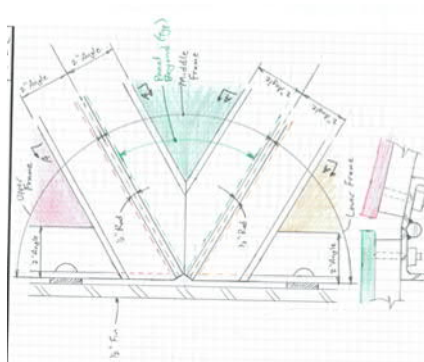
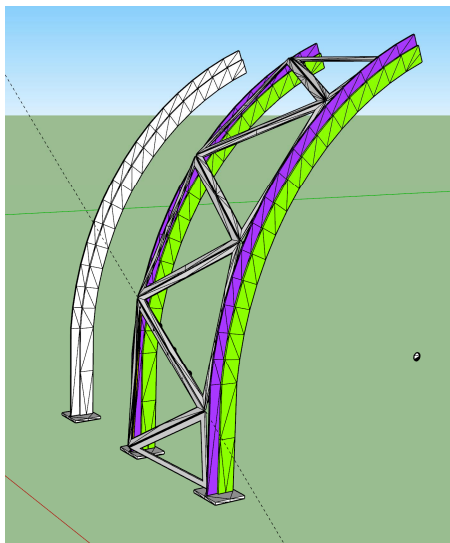
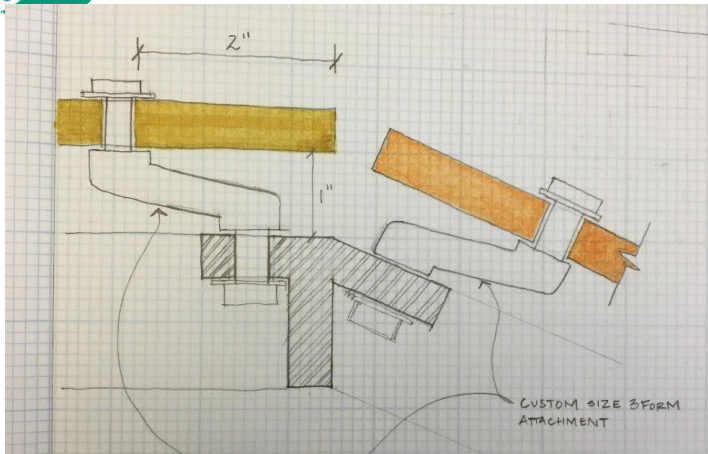


 Evolution



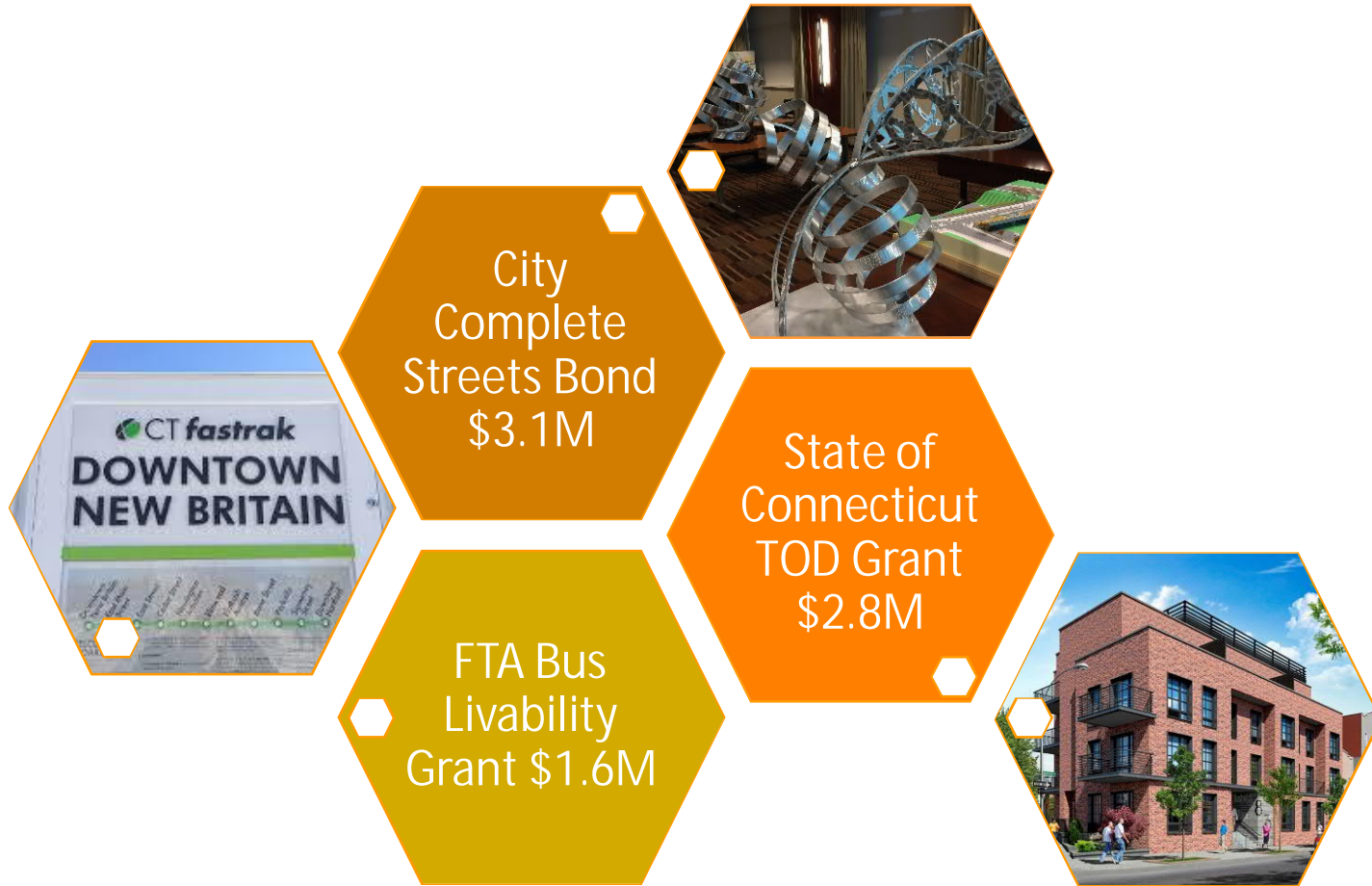


Evolution





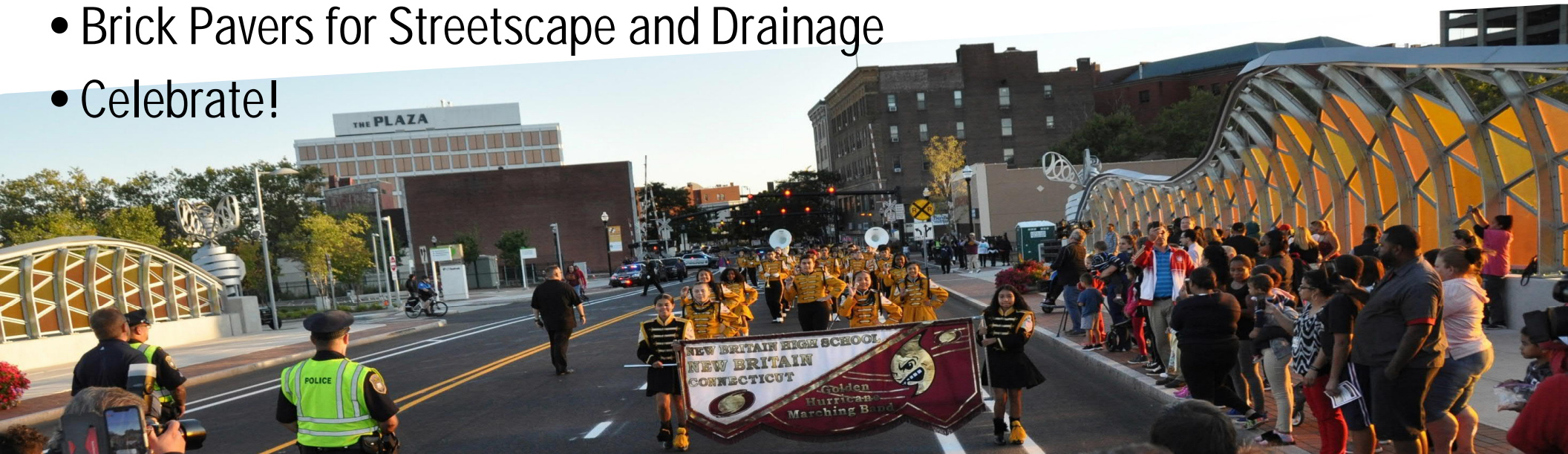
Evolution





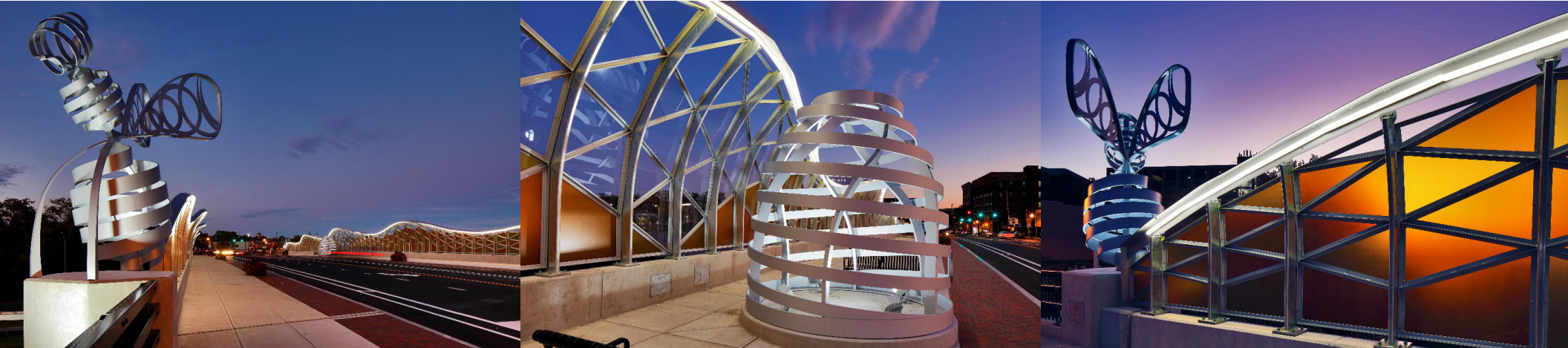
Bee Different

- Lane Reduction (5 to 3) to Create Wider Sidewalks
- City Restriped New Traffic Lanes a Year Prior to Construction
- Panels Are Aesthetic and Block Sun, Wind, and Noise
- Lit for Safety
- Brick Pavers for Streetscape and Drainage
- Celebrate!





Bee Different





Bee Different





Outcome - DOT

Guideline for Aesthetic Objects and Treatment within CTDOT ROW



Funding for
Next Phase



Outcome - Community





Outcome - Development





Keys to Success

- Trust
- Collaboration
- Accepting Risk
- Forward Thinking
- Considering the Needs of All





Q U E S T I O N S ?